



AVALIAÇÃO DE PODRIDÃO US. DIANA STAB – OUTUBRO 2017

05 DE OUTUBRO DE 2017



DIA DE CAMPO

Problemas causados por *Colletotrichum falcatum* em cana-de-açúcar

Data: 5 de outubro de 2017
Local: Usina Diana, Avanhandava, SP
Organização: Marcio Nono – Usina Diana
Raffaella Rossetto – STAB

13:00-13:30 - Abertura

13:30-14:00 - A influência das podridões nos canaviais da Usina Diana - Márcio Nono - Usina Diana

14:00 – 14:30 – Aspectos atuais de *Colletotrichum falcatum* em cana-de-açúcar - Alvaro Sanguino

14:30 – 15:00 – Controle de pragas e incidência de doenças oportunistas - Enrico Arrigoni

15:00 – 15:30 – Aspectos da nutrição e incidência de doenças em cana-de-açúcar - Silvano Abreu

15:30 – 17:00 – Visita ao campo

Localização - Seguir pela Rodovia Marechal Rondon (SP 300) até o trevo Avanhandava.



Realização:



INSCRIÇÃO ONLINE

Obs.: Preencher a inscrição online e aguardar a confirmação em seu e-mail. Obrigatório o preenchimento completo para validar a inscrição. Taxa de inscrição isenta. Vagas limitadas. Mais informações : (19) 3433-3311 ou secretaria@stab.org.br.

- STAB;
- PREOCUPAÇÃO DO SETOR COM A DOENÇA;
- BREVE RELATO – EVOLUÇÃO DA DOENÇA NA DIANA;



PRECIPITAÇÃO PLUVIOMÉTRICA - Boletim Mensal com Lançamentos Diários e CRESCIMENTO DA CANA

TAXA CRESC - CANA	18%	15%	13%	5%	6%	2%	4%	8%	11%	18%	100%
-------------------	-----	-----	-----	----	----	----	----	----	-----	-----	------

ANO	JAN		FEV		MAR		ABR		MAI		JUN		JUL		AGO		SET		OUT		NOV		DEZ		TOTAL		MÉDIA MENSAL	
	PP	QD	PP	QD	PP	QD	PP	QD	PP	QD	PP	QD	PP	QD	PP	QD	PP	QD	PP	QD	PP	QD	PP	QD	PP	QD	PP	QD
1993	195,9	6,0	139,2	9,0	49,5	4,0	58,5	2,0	33,0	3,0	58,5	2,0	0,0	0,0	66,5	4,0	101,2	7,0	24,0	4,0	57,0	3,0	289,0	12,0	1.072,3	56,0	89,4	4,7
1994	273,2	12,0	78,0	3,0	48,0	6,0	75,5	3,0	22,5	3,0	13,2	2,0	0,0	0,0	0,0	0,0	0,0	0,0	142,0	4,0	48,7	3,0	215,0	8,0	916,1	44,0	76,3	3,7
1995	219,0	10,0	417,0	15,0	119,5	3,0	37,5	2,0	15,1	1,0	23,0	3,0	32,0	3,0	0,0	0,0	68,5	6,0	125,3	12,0	76,0	4,0	217,5	14,0	1.350,4	73,0	112,5	6,1
1996	62,2	7,0	126,5	10,0	168,3	7,0	60,8	4,0	123,5	9,0	19,0	2,0	0,0	0,0	14,0	2,0	143,0	9,0	151,8	9,0	161,5	10,0	193,8	15,0	1.224,4	84,0	102,0	7,0
1997	419,0	23,0	87,0	6,0	170,0	9,0	73,0	5,0	155,5	7,0	248,5	9,0	28,0	2,0	0,0	0,0	88,0	6,0	134,0	8,0	231,6	11,0	101,3	5,0	1.735,9	91,0	144,7	7,6
1998	173,0	8,0	213,8	13,0	303,5	11,0	157,8	8,0	93,5	4,0	16,0	3,0	2,8	1,0	135,6	8,0	100,5	6,0	204,5	11,0	113,8	4,0	336,3	15,0	1.851,1	92,0	154,3	7,7
1999	550,8	19,0	211,3	13,0	120,3	7,0	145,8	5,0	63,5	2,0	85,5	4,0	0,0	0,0	0,0	0,0	62,3	6,0	27,3	5,0	107,0	7,0	241,5	14,0	1.618,3	82,0	134,9	6,8
2000	269,0	13,0																										
2001	286,5	12,0																										
2002	243,0	10,0	357,3	11,0	85,0	8,0	0,0	0,0	47,0	6,0	0,0	0,0	59,5	3,0	52,7	3,5	79,4	7,5	48,5	4,0	188,3	9,5	143,0	7,0	1.303,7	69,5	108,6	5,8
2003	536,3	18,5	203,8	9,5	152,3	7,5	83,0	5,0	23,0	3,5	30,3	1,5	11,0	1,0	33,5	6,0	23,0	4,5	103,3	8,5	112,0	10,0	275,8	11,0	1.587,3	86,5	132,3	7,2
2004	282,8	11,0	189,0	10,0	87,0	3,0	121,8	6,0	176,5	11,5	63,0	5,0	82,5	2,0	0,0	0,0	1,0	1,0	214,0	12,5	164,3	8,5	200,0	9,5	1.581,9	80,0	131,8	6,7
2005	482,0	18,0	50,0	1,0	151,0	6,0	207,0	5,0	62,0	4,0	32,0	3,0	18,0	3,0	14,0	3,0	67,0	5,0	221,0	12,0	181,0	4,0	244,0	9,0	1.729,0	73,0	144,1	6,1
2006	228,0	8,0	345,0	12,0	82,0	11,0	5,0	1,0	12,0	2,0	15,0	1,0	38,0	1,0	25,0	2,0	53,0	4,0	133,0	5,0	53,0	5,0	291,0	14,0	1.280,0	66,0	106,7	5,5
2007	425,0	21,0	152,0	8,0	117,0	5,0	23,0	2,0	125,0	4,0	0,0	0,0	86,0	4,0	0,0	0,0	7,0	1,0	61,0	4,0	115,0	5,0	195,0	8,0	1.306,0	62,0	108,8	5,2
2008	147,0	9,0	229,0	13,0	145,0	7,0	105,0	6,0	73,0	3,0	0,0	0,0	0,0	0,0	98,0	3,0	28,0	2,0	86,0	6,0	44,0	5,0	202,0	10,0	1.157,0	64,0	96,4	5,3
2009	289,0	14,0	144,0	9,0	207,0	14,0	60,0	4,0	29,0	2,0	93,0	7,0	75,0	4,0	179,0	6,0	214,0	12,0	107,0	6,0	284,0	14,0	386,0	17,0	2.067,0	109,0	172,3	9,1
2010	264,0	17,0	95,0	8,0	149,0	5,0	29,0	5,0	82,0	3,0	17,0	2,0	0,0	0,0	0,0	0,0	166,0	7,0	51,0	8,0	74,0	6,0	131,5	11,0	1.058,5	72,0	88,2	6,0
2011	274,5	11,0	210,0	10,0	353,0	16,0	91,5	5,0	0,0	0,0	40,0	3,0	0,0	0,0	20,0	4,0	5,0	1,0	191,5	6,0	128,0	3,0	176,5	9,0	1.490,0	68,0	124,2	5,7
2012	245,0	13,0	85,5	7,0	50,0	1,0	128,5	7,0	82,5	4,0	225,5	7,0	0,0	0,0	0,0	0,0	110,5	5,0	32,5	4,0	206,5	8,0	258,0	9,0	1.424,5	65,0	118,7	5,4
2013	228,0	8,0	205,0	7,0	107,5	6,0	48,0	6,0	185,5	5,0	82,5	5,0	37,0	3,0	0,0	0,0	62,0	4,0	63,5	7,0	91,0	6,0	94,5	8,0	1.204,5	65,0	100,4	5,4
2014	113,0	13,0	110,5	8,0	88,0	9,0	23,5	5,0	28,0	2,0	2,0	1,0	40,0	7,0	2,0	1,0	127,5	7,0	44,0	5,0	221,5	13,0	178,5	8,0	978,5	79,0	81,5	6,6
2015	137,0	8,0	323,5	16,0	150,0	11,0	167,5	6,0					5,0	17,0	1,0	127,0	8,0	138,0	8,0	239,0	18,0	108,0	10,0	1.594,5	102,0	132,9	8,5	
2016	261,5	13,0	283,5	9,0	71,0	7,0	59,0	2,0					1,0	72,5	4,0	36,5	4,0	96,0	8,0	37,5	4,0	220,0	11,0	1.354,0	78,0	112,8	6,5	
2017	319,0	14,0	110,0	9,0	111,0	6,0	229,5	1,0																	778,5	38,0	64,9	3,2
MÉDIA	276,9	12,7	193,9	9,5	139,8	8,0	79,5	4,3	73,4	4,3	51,6	3,1	28,5	2,0	35,2	2,4	77,7	5,2	108,4	6,9	138,8	7,7	216,3	10,8	1.393,8	74,9	116,1	6,2

AVALIAÇÃO DA PRECIPITAÇÃO MENSAL

2016 = 130 MM
2017 = 340 MM

- Acima de 110% da média
- De 85% a 110% da média
- Abaixo de 85% da média

- ALTA INFESTAÇÃO NA REGIÃO: EXCESSO DA SP 81 3250 (FERRUGEM ALARANJADA);
- FALTA DE PLANEJAMENTO DE VIVEIROS (MUDAS SADIAS);
- 2015 CHUVOSO E MOAGEM NA ENTRESAFRA;
- ENTRESAFRA DE 2015_2016 – ESTRESSOU O CANAVIAL COLHIDO;
- NÍVEL DO CONTROLE DE PRAGAS;
- NÍVEL DE ESTRESSE DO CANAVIAL (3250/ CTC 15).





NECESSIDADE DE VISITAS ROTINEIRAS NAS ÁREAS DE PRODUÇÃO PARA DETERMINAÇÃO DE CONDUTAS – TODA A EQUIPE.





DO AÇÚCAR
AO ETANOL
SEM PERDER
A ENERGIA.

Determinação do início de infestação para direcionamento de colheita:

- USO DO DRONE – VÔO QUINZENAL SOBRE TODA ÁREA;
Responsável: Popó.
- Visita pelo supervisor da área, com preenchimento de planilha;
- IMAGENS SIGMA, melhor utilização da ferramenta pela equipe;
- Daniel e Renato Rodrigues: avaliação mensal das áreas com alta infestação na safra.



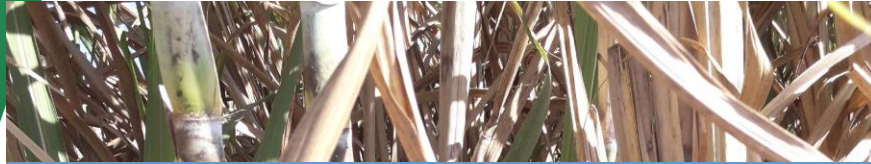
LEVANTAMENTO DE INFESTAÇÃO NA PRÉ-COLHEITA

- Colhe-se 10 canas e conta-se as infectadas que servirá de banco de dados para geração de “mapa de calor”: responsável pela avaliação: José Roberto;

MAPA DE INFESTAÇÃO DO ANO.



CONTROLE PRAGAS E DOENÇAS 2017



Dr. José Francisco – Entomologista
Dr. Modesto – Fitopatologista

ATUALIZAÇÃO:

RECEBEMOS O INSUMO DA BIOCONTROL (STA BARBARA OESTE);
STAB PARA DIA DE CAMPO NA DIANA;
CONTATO COM STA ISABEL – FORTE INFESTAÇÃO EM ALGUMAS ÁREAS;
NEWTON MACEDO – AVALIAÇÃO DA MATRIZ DE CONTROLE DE CIGARRINHA;
UFSCAR – COLHEU PLANTAS PARA LABORATÓRIO;
VISITA CAMPO FLORIDO PARA AVALIAR APLICAÇÕES DO QUALITY, biocontrole com o Tricoderma, fungo competidor com o Collethotricum e com o fusarium, para aplicação sobre a palha na época úmida.

NENHUMA RECOMENDAÇÃO CONSISTENTE PARA CONTROLE, PREVENTIVO, ATÉ O MOMENTO.



Compra de desenterrador palha;
Trichograma galloi para broca;
Corte de soca com nematicida/inseticida.



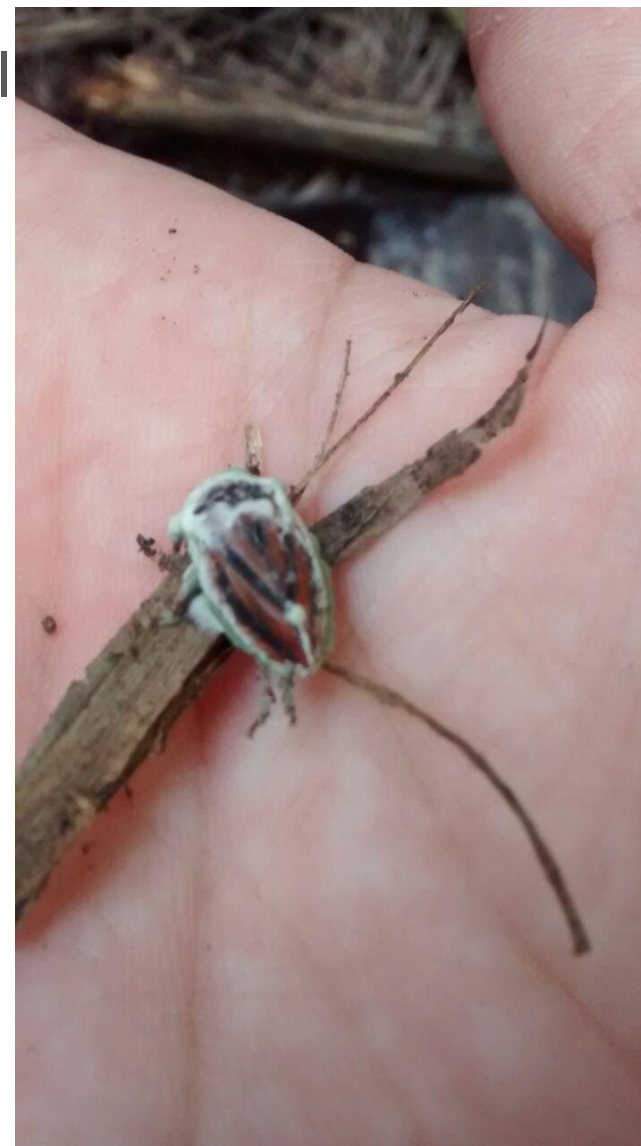
PROJETOS/TESTES:

PRAGAS: INTRODUÇÃO DO METHARIZIUM

TESTE/AVALIAÇÃO T. gal



DO AÇÚCAR
AO ETANOL
SEM PERDER
A ENERGIA.



4 PILARES PARA CONTROLE:

- VIVEIROS SADIOS;
- ADUBAÇÃO EQUILIBRADA (MICRONUTRIENTES);
- CONTROLE DE PRAGAS;
- BIOCONTROLE PARA EQUILÍBRIO POPULACIONAL.





DO AÇÚCAR
AO ETANOL
SEM PERDER
A ENERGIA.



marcio.nono@dianabioenergia.com.br

18 99765 8785

